

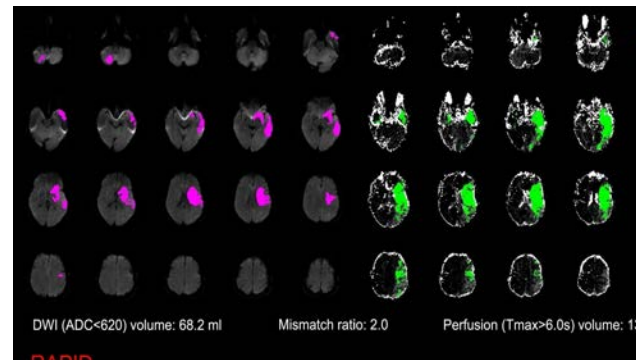
## DAWN of a New Era....

Results from the DAWN™ stroke trial and DEFUSE 3 trial show that select patients suffering a major ischemic stroke recovered significantly better with mechanical retrieval of the blood clot accompanied by standard medical therapy compared to patients who received only standard medical therapy when initiated up to 24 hours after the stroke.

Working with the nation's leaders in stroke care, Hartford HealthCare's new EMS Protocols for stroke care include:

*Large bore IV access (Right AC preferred)  
BGL, EKG and standard patient care  
Cincinnati Stroke Scale with last known normal time.*

Upon arrival at Backus Hospital, Hartford Hospital, MidState Medical Center, and The Hospital of Central Connecticut, patients with a suspected stroke will receive a CT Scan via RAPID software, pinpointing the location and severity of effected tissue. This drastically speeds up follow-up care and improves quality.



**EMS STRONG**  
**STRONGER TOGETHER**

EMS Week is not only an opportunity for the country to recognize the efforts of our EMS providers, but is also an opportunity to say **thank you!**

On behalf of the staff and providers within Hartford HealthCare we want to thank you for the great work you do every day. You provide the vital initial care we rely on – you are our valued partner in the continuum of care.

Over the next year, Hartford HealthCare plans to unveil new clinical trials currently in development specifically for EMS as well as the latest IT platforms that will allow you to provide better, faster care for your patients!

We look forward to your feedback and collaboration.

### Inside this issue

#### Page 2

Updates from Backus, MidState, THOCC and Windham Hospitals

#### Page 3

Updates from Charlotte Hungerford and Hartford Hospitals

#### Page 4

Updates from LIFE STAR and pertinent Hartford HealthCare news

## THOCC & MidState Medical Center Central Region HIGHLIGHTS

EMS – Coordinator  
Sean Fitch, EMT-P, EMS-I  
[Sean.Fitch@hhchealth.org](mailto:Sean.Fitch@hhchealth.org)



**Great saves....Wallingford FD Paramedics David Perrelli and Michael Martino** responded to an 86 year old female who presented with a sudden onset of left sided

weakness, slurred speech and left sided facial droop while attending her husband's wake. The crew initiated IV therapy, 12-Lead EKG and notified MidState Medical Center of a Stroke Alert. At MSMC the patient received TPA and was sent for advanced imaging where it was determined she was a candidate for clot retrieval at Hartford Hospital. At HH it was found after further imaging that the TPA had decreased the size of the infarct and clot retrieval was no longer indicated.

### Under our new stroke protocols

Any transfer of a Stroke /CVA patient who has or is receiving TPA needs to have a Cincinnati Stroke scale performed and documented **every 15 minutes**.



**Congratulations to New Britain EMS**



**Congratulations to New Britain EMS** – a 2018 Gold Plus recipient by the American Heart Association: Mission Lifeline Program. To qualify, the organization exceeded national benchmarks in STEMI care. In the past year on average:

- 911-balloon: 90 min
- First EMS contact to balloon: 77 min
- 911-12 lead: 20 min
- First EMS contact to 12-lead: 7 min

### Upcoming Events / Notes

- o **Attention THOCC/MMC Medics** - Please look for a survey coming out soon for all Medics regarding controlled substances, types and amounts.

## Backus Hospital and Windham Hospital East Region HIGHLIGHTS

EMS – Coordinator & Paramedic Mgr - Windham Hospital  
Paul Pedchenko, EMT-P, EMS-I  
[Paul.Pedchenko@hhchealth.org](mailto:Paul.Pedchenko@hhchealth.org)



**Looking Back... Windham Paramedics recently celebrated an important 2 year anniversary!**

The Windham Hospital Paramedics as a matter of routine is detailed to all NCAA Basketball Games held at Gampel Pavilion. During the Senior Day Game in 2016, EMS was alerted to an elderly female that had passed out while in the stands. When EMS arrived CPR had been initiated by people in the crowd and the patient was found in cardiac arrest. *The patient was successfully resuscitated by EMS and transported by ground to Hartford Hospital with the Windham Hospital Paramedic on board. **The patient had a pacemaker implanted at Hartford Hospital and made a full recovery.***

Backus Hospital EMS – Coordinator  
Jeffrey Way, EMT-P, EMS-I  
[Jeffrey.Way@hhchealth.org](mailto:Jeffrey.Way@hhchealth.org)

Backus Hospital has begun a trial of e-Bridge with Paramedics from American Ambulance and the Mohegan Tribal Fire Department. This platform is a HIPAA compliant mobile app that will link EMS providers to the hospital, providing EMS the capability of requesting Trauma/Stroke/STEMI/Sepsis Alerts with telemedicine features at the press of a button.



### **Upcoming CMEs at Backus**

**June 5, 2018 "Kids are NOT little adults":** Pediatric considerations in Emergency and Critical Care Transport *presented by* Sean Trainor, BSN, NRP, CCRN  
**July 3, 2018 Respiratory Emergencies** *presented by* William Muskett, BS, NRP, RRT, HHC Regional RT Mgr  
**August 7, 2018 Stroke Program Update and Management of Stroke Emergencies** *presented by* Melissa Lawson, RN, Backus Hospital Stroke Program Coordinator

# Hartford Hospital

## Hartford Region HIGHLIGHTS

EMS – Coordinator  
David Bailey, EMT-P, EMS-I  
[David.Bailey@hhchealth.org](mailto:David.Bailey@hhchealth.org)

### Job Well Done!



#### **“Off Hours” STEMI save! Aetna Ambulance Paramedics Mitch Karr and Jacob Brungard**

responded to a 54 y/o female c/o 24 hour duration progressively worsening chest pain. UOA to Hartford, patient was brought to the cath lab, blockage cleared and was released 4 days later.

Key Times	Time
First medical contact (12-lead capable EMS):	<b>03:12</b>
EMS first 12 Lead EKG:	<b>03:16</b>
12 lead transmit Time:	<b>03:19</b>
EMS radio STEMI alert:	<b>03:23</b>
EMS transport date/time:	<b>03:24</b>
Hospital reception/registration time:	<b>03:32</b>
Cath lab arrival:	<b>04:01</b>
First Device Activation:	<b>04:30</b>
<b>Benchmark total time (&lt;90 minutes)</b>	<b>00:78</b>



#### **Successful Care with a Great Outcome! Windham Paramedic Paul Pedchenko with Hebron FD EMTs Karl Lizotte and Ryan Petersen**

responded recently to a 70 year old female with sudden onset of 8/10 c/p. In field findings revealed 3<sup>rd</sup> degree AVB at a heart rate of 34. At Hartford Hospital, the patient was brought to the cath lab, needing intubation and resuscitation twice prior to the blockage being removed. The patient was discharged 3 days later!

First Medical Contact by Medic: 12:26

First Device Activation: 13:43

Elapsed time: **77 minutes**

(Including 22 minute transport to hospital!)

# Charlotte Hungerford Hospital

## Northwest Region HIGHLIGHTS

EMS-Coordinator  
Paul Rabeuf, EMT-P, EMS-I, RRT  
[Paul.Rabeuf@hhchealth.org](mailto:Paul.Rabeuf@hhchealth.org)



### Practice Makes Perfect!

Hundreds of hours of planning, 125 volunteers, 20+ agencies and departments all led to a well – executed MCI Drill in May. With three EMS agencies providing SMART triage, as well as local FDs providing a HAZMAT and decontamination setup, the drill successfully stressed the system to identify strengths and areas of opportunities.

#### EMS Takeaways

- Regular review of triage protocols using SMART triage is necessary for EMTs as well as Paramedics and department officers.
- Education of new and experienced EMTs and Paramedics, including table top exercises on initial on-scene operations.
- Regular review of MCI plans for your town and community.

#### Upcoming Continuing Education Opportunities

All CMEs begin at 1900hrs in the Memorial Conference Room

May 25 – No CME (Memorial Day)

June 25 – CME Topic TBD



# LIFE STAR

In addition to caring for critically ill and time sensitive patients, LIFE STAR is capable of caring for and treating patients with:

- Chest tubes
- Extracorporeal membrane oxygenation
- Hemodynamic monitoring
- High risk obstetrics
- Intra-aortic balloon pump therapy
- Isolette (Incubators)
- LVADs
- Mechanical ventilation
- Neonates and Pediatrics
- Pericardiocentesis
- Transvenous cardiac pacing
- Ventriculostomy monitoring
- Video laryngoscopy



## Did You Know?

LIFE STAR now serves our state and region with three fully staffed helicopters based at:

**Backus Hospital**  
*Norwich, CT*

**Barnes Regional Airport**  
*Westfield, MA*

**MidState Medical Center**  
*Meriden, CT*

*LIFE STAR's Flight Nurses and Flight Respiratory Therapists/Paramedics have extensive critical care and EMS training and are an extension of Hartford Hospital's critical care units. Each has extensive training in difficult airway management.*

## SYSTEM-WIDE TIDBITS

# Save the Date

**1<sup>st</sup> Annual Ayer Neuroscience  
Institute Symposium**

**Saturday, October 27**

**Connecticut Convention Center**

*Learn from leading national experts in stroke care, sports – related injuries, headaches, epilepsy, and emergency neurological care.*

**EMS CMEs pending**

**Like us on Facebook!**



**Join our page "HHC EMS"**

**Visit us at**



Hartford HealthCare is proud to be the Keynote Presenting Sponsor and Portfolio Sponsor at the 2018 EMS Pro. Visit us at our Neuroscience and Care Logistics Center Booth as well as LIFE STAR on the Exhibitor Floor!