

# GYNECOLOGY

## Treatment

Version Date: 201216

Coordinator(s):

Siobhan Reilly | Siobhan.reilly@hhchealth.org | 860 696 4958

Leah Persky | Leah.Persky@hhchealth.org | 860 972 5026

GYN Solid  
Tumor

Cervical/ Vaginal

■ ■ ■

NRG GY006:  
Phase III  
Randomized RT &  
Cisplatin (impedes  
DNA synthesis)  
Alone or in Combo  
with Intravenous  
Triapine (impedes  
DNA synthesis) for  
Newly Diagnosed  
Bulky Stage IB2,  
Stage II, IIIB, or IVA  
CA of the Cervix or  
Stage II-IVA Vaginal  
CA  
(PI: Brown)  
[Link](#)

### KEY

□ Open to Accrual

■ Enrollment on Hold

🎯 Immuno Oncology

■ Pipeline/Opening Soon

□ Supportive Care/Non TX

### LOCATIONS

- HARTFORD
- HOCC
- MIDSTATE
- BACKUS
- WINDHAM
- AVON
- MANCHESTER
- WATERFORD

# GYNECOLOGY

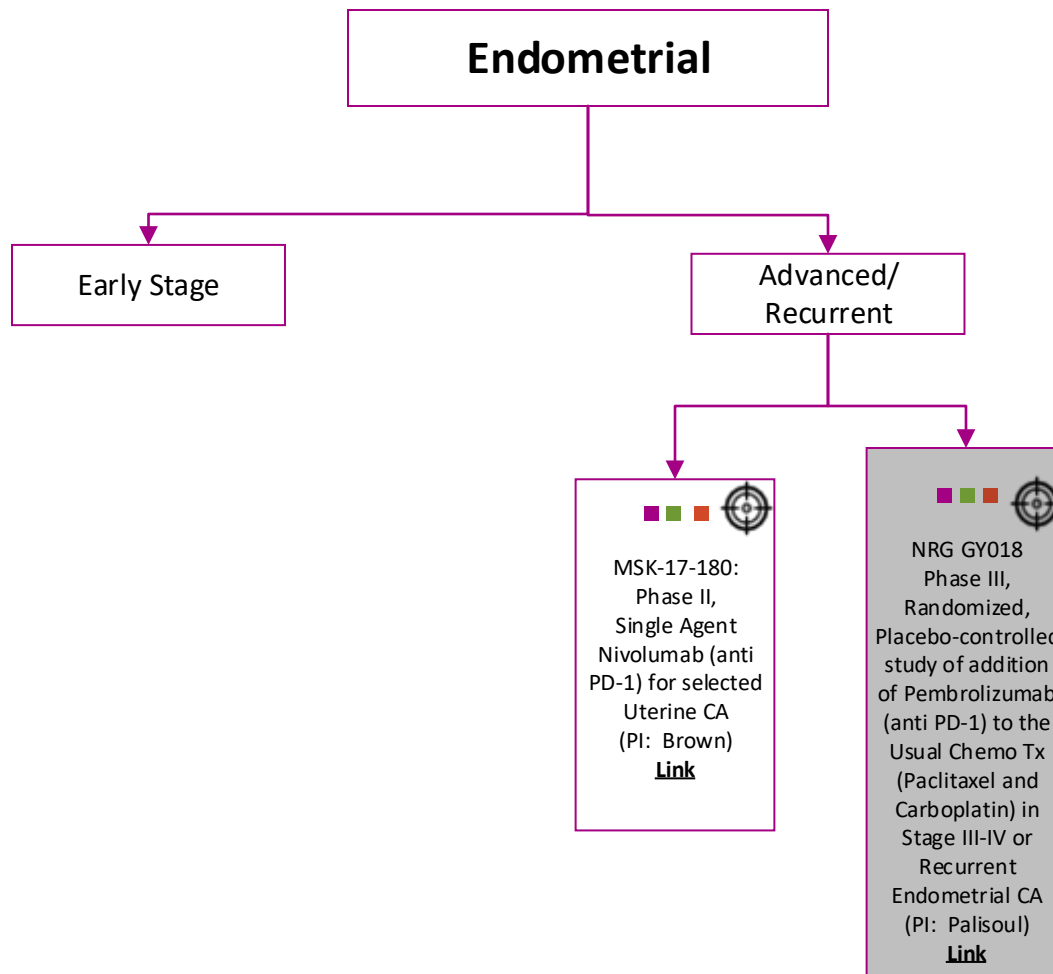
## Treatment

Version Date: 201216

Coordinator(s):

Siobhan Reilly | Siobhan.reilly@hhchealth.org | 860 696 4958

Leah Persky | Leah.Persky@hhchealth.org | 860 972 5026



### KEY



Pipeline/Opening Soon

Enrollment on Hold

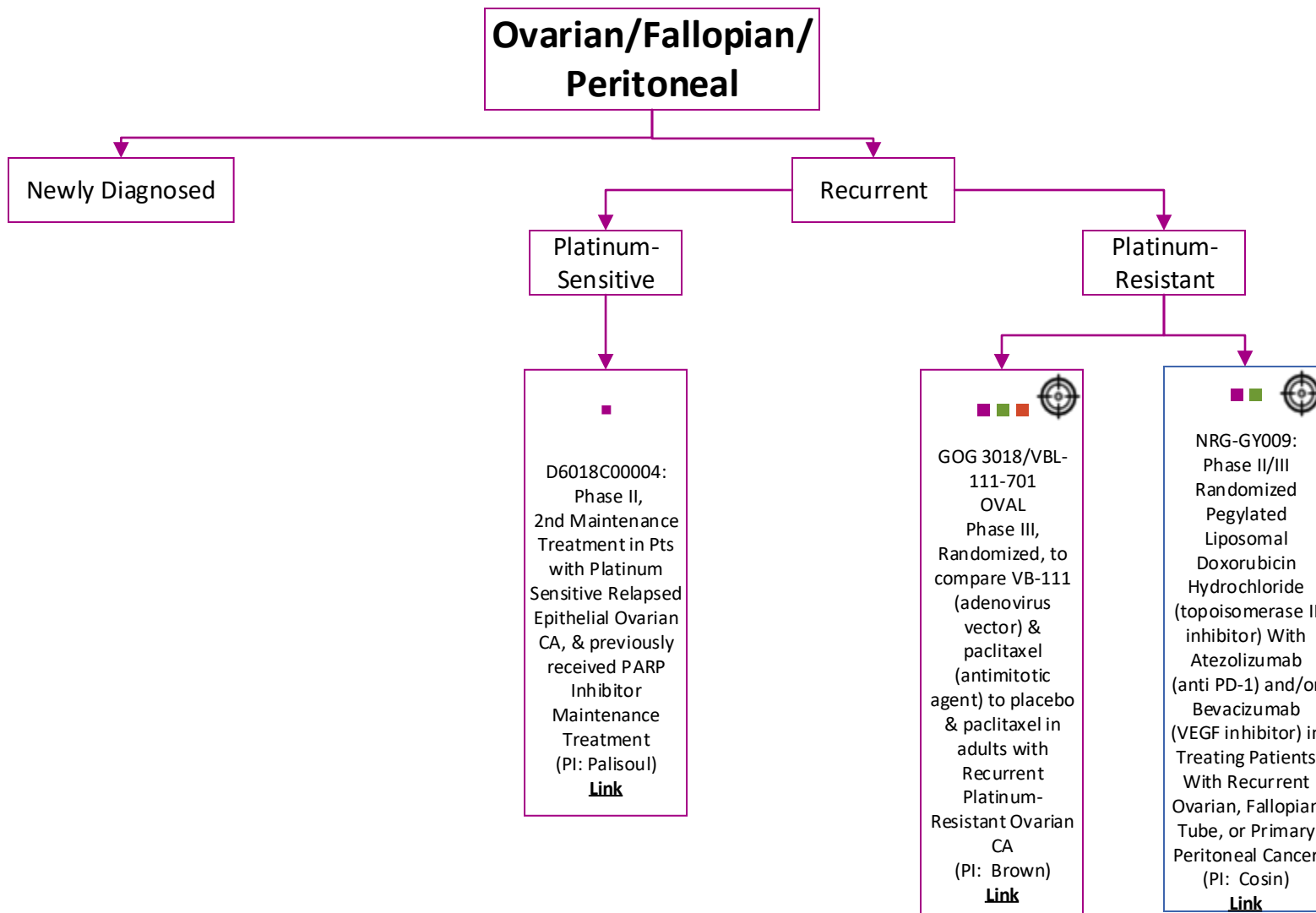
Immuno Oncology



Supportive Care/Non TX

### LOCATIONS

- HARTFORD
- WINDHAM
- HOCC
- AVON
- MIDSTATE
- MANCHESTER
- BACKUS
- WATERFORD



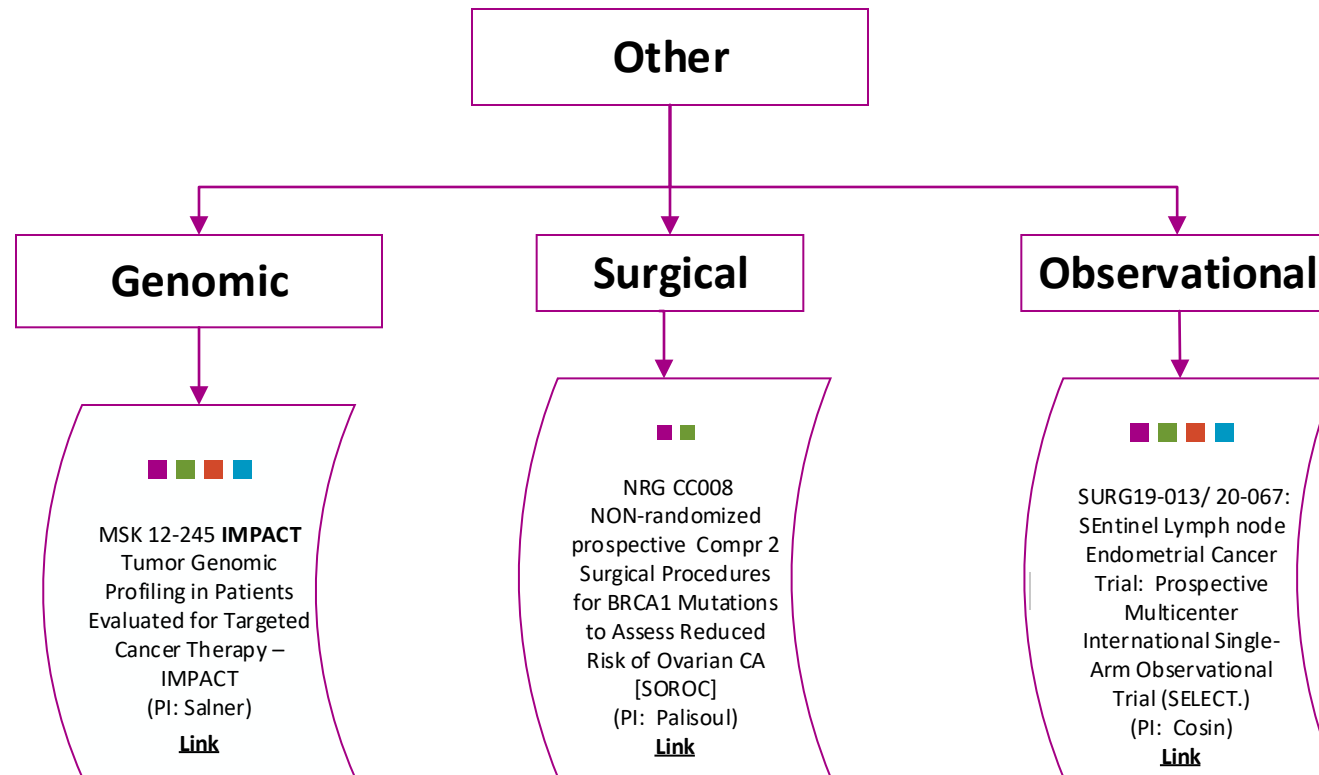
### KEY

- Open to Accrual
- Enrollment on Hold
- Pipeline/Opening Soon
- Supportive Care/Non TX



### LOCATIONS

- HARTFORD
- HOCC
- MIDSTATE
- BACKUS
- WINDHAM
- AVON
- MANCHESTER
- WATERFORD



IMPACT: Susanne Morrill | susanne.morrill@hhchealth.org | 860-972-1588

### KEY

Open to Accrual

Enrollment on Hold

Immuno Oncology

Pipeline/Opening Soon

Supportive Care/Non TX

### LOCATIONS

- HARTFORD
- WINDHAM
- HOCC
- AVON
- MIDSTATE
- MANCHESTER
- BACKUS
- WATERFORD

# GYNECOLOGY

## Treatment

Version Date: 201216

Coordinator(s):

Siobhan Reilly | Siobhan.reilly@hhchealth.org | 860 696 4958

Leah Persky | Leah.Persky@hhchealth.org | 860 972 5026

### Phase I

■  
NRG-GY022:  
Assessment of  
Carboplatin  
Clearance  
Predictors: A PK  
Study on NCI-  
Sponsored Clinical  
Trials or Standard  
of Care  
Treatments Using  
Carboplatin  
(PI: Palisoul)  
[Link](#)

#### KEY

-  Open to Accrual
-  Enrollment on Hold
-  Pipeline/Opening Soon
-  Supportive Care/Non TX



Immuno Oncology

#### LOCATIONS

- HARTFORD
- WINDHAM
- HOCC
- AVON
- MIDSTATE
- MANCHESTER
- BACKUS
- WATERFORD